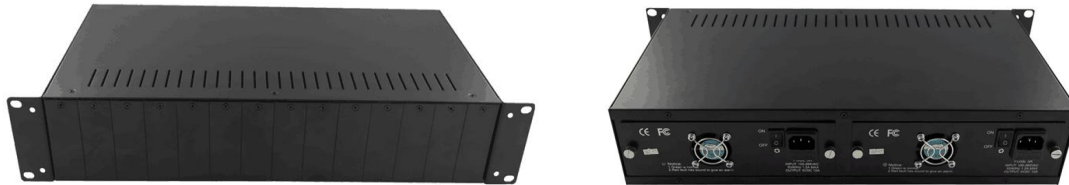


## **19 inch 2U 14 Slots Double Power Supply Rack-mount**

### **Media Converter Chassis**

#### **DK-MC-14U**



DK-MC-14U is a highly integrated Media Converter Chassis. It is designed with a built-in switch power board, which is mature in technology, stable and reliable, and can support 14 media converters to work stably for a long time. DK-MC-14U supports hot plug, and the media converter can be replaced or installed at any time, which is convenient for maintenance and management. DK-MC-14U is compatible with 100M/1000M, single-mode/multi-mode, single-fiber/dual-fiber and other 1-optical and 1-electrical media converters, and it is very flexible to use.

#### **Main Features**

- The configuration of main and standby power supplies ensures uninterrupted operation of the system.
- AC220V AC100-260V, 50-60Hz power supply mode makes the system suitable for various working environments.
- Support multiple external power desktop media converters to work at the same time, which greatly improves the application of the system.
- Each media converter supports hot plug function.

#### **Product Parameter**

Number of slots: 14 slots

Power input: AC 100-260 V, 50-60 Hz.

DC output: DC +5V

Ripple: ≤50mv

Noise: ≤50mv

Power protection: overvoltage protection, overcurrent protection and short circuit protection.

Working temperature: -10℃-55℃

Storage temperature: -20℃-70℃

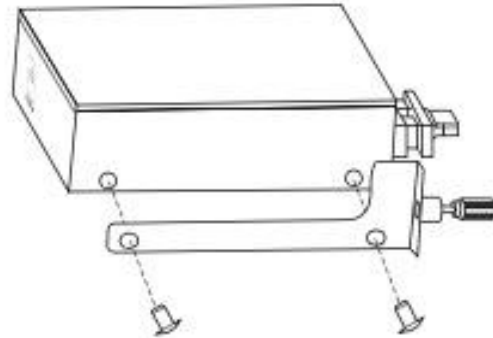
Relative humidity: 5%-90%

External dimensions: 485×215×90mm (length× width× height), 19 inches and 2U high.

## Product Installation

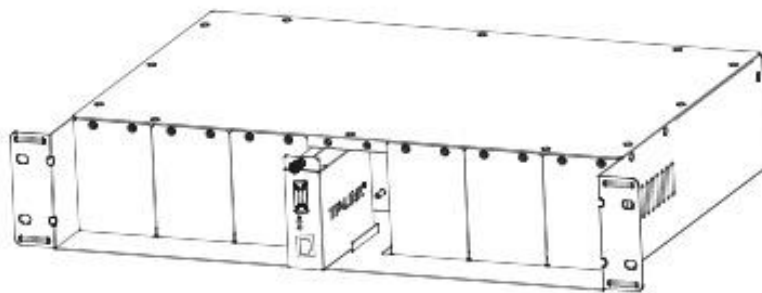
1. Assemble the media converter and bracket together.

- ① Unscrew the two screws on the side of the transceiver (please be careful not to unscrew the screws with tamper-proof stickers, otherwise there will be no warranty).
- ② Attach the bracket to the side of the media converter and screw back the screw (as shown in Figure 1).



2. Fix the media converter with bracket to the rack (as shown in Figure 2).

- ① Remove the metal baffle on the frame of media converter.
- ② Align the power socket of the media converter with the DC plug on the rack, and tighten the fixing screw on the bracket after inserting it.



3. Install the media converter rack on the machine room cabinet (as shown in Figure 3).

